



FORD EVEREST NEXT GEN MY2022 ON ROCK SLIDERS

IMPORTANT! – READ BEFORE INSTALLATION

- This product must be installed exactly as per these instructions using only hardware supplied.
- Take a few moments to read instructions thoroughly before beginning work.
- In the event of damage to any bar component please contact OFFROAD ANIMAL to arrange repair/replacement of components.
- Do not use this product for any vehicle make or model other than that specified on these instructions.
- Do not remove labels from this product.
- This product and its fixings must not be modified in any way unless stated in these fitting instructions.
- The installation of this product is recommended for trained personnel.
- These instructions are correct at time of publication. OFFROAD ANIMAL cannot be held responsible for the impact of any changes subsequently made by the vehicle manufacturer. If you find something has changed please contact us to let us know!
- During installation it is the duty of the installer to check correct operation/clearances of all components.
- If Instructions are to be printed for reference in the workshop, it is recommended that they are printed in colour, for best legibility.
- Fitting time estimated 1-2 hours

GENERAL CARE AND MAINTENANCE

Only wash the product with a PH neutral car wash to prevent paint damage and discolouration.

Plastic parts may be maintained with silicone spray.

Do not use acidic or alkaline based cleaning products.

It is important to perform regular checks (pre trip or on an annual basis) on the installed product. Checks include:

- Visual inspection for damage (eg. cracks, chips, dents etc.)
- Electrical wiring is not rubbing anything or worn out
- Bolts are torqued to correct specification (see torque guide below)

For touching up small stone chips, Offroad Animal recommends the following paint products:

- Dupli-Color Trim & Bumper Paint Black (TB101)
- VHT Hood, Bumper & Trim Paint Black (SP27)

BOLT TORQUE SETTINGS

Use the following bolt torques on all general fasteners, unless otherwise specified.

| GENERAL FASTENERS | |
|-------------------|-----------|
| Size | Torque Nm |
| M5 | 5 Nm |
| M6 | 9 Nm |
| M8 | 22 Nm |
| M10 | 44 Nm |
| M12 | 77 Nm |

Use the following bolt torques on all structural front bar mount and tow point fasteners, and rear towbar fasteners, unless otherwise specified.



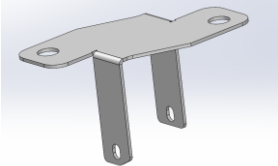
| FRONT BAR MOUNTS AND TOW POINTS + REAR TOWBAR | |
|--|-----------|
| Size | Torque Nm |
| M10 | 57 Nm |
| M12 | 100 Nm |
| M14 | 164 Nm |
| M16 | 248 Nm |

Always use a torque wrench to set correct torque settings. Ensure torque wrench is set to Nm unit of measurement. Otherwise perform conversion to lb-ft.

PARTS LISTING

IMPORTANT: Check all parts are present before beginning work! Contact OFFROAD ANIMAL if something is missing.

Main Parts – In the Box

| Qty | Part Number | Description | Image |
|-----|---------------------|--|--|
| 1 | RSW-FEV-NG-22-ASM1L | Ford Everest Next Gen Slider Weldment |  |
| 1 | RSW-FEV-NG-22-ASM1R | Ford Everest Next Gen Slider Weldment |  |
| 1 | B-0959 | Everest High Spec Electronic Module Slider Mount |  |

Small Parts – Contained in Small Parts Kit Bag

| Qty | Part Number | Description |
|-----|-------------------------|--|
| 6 | BP-COM-M10X30-250-ASMO | Bolt Plate M10X30, 250mm stem |
| 4 | NP-COM-M10-80-ASMO | M10 LOLLYPOP NUT PLATE 80MM LONG |
| 8 | M10 FLANGE NUT | Flange Nut, M10x1.5 G8.8 ZP |
| 6 | M10 FW LHD | WASHER, FLAT M10X28.5X2.5 |
| 6 | M10 x 30 | Bolt Hex, M10X30x[1.5], GR8.8 ZP |
| 2 | M6 FLANGE NUT | Flange Nut, M6x1 G8.8 ZP |
| 2 | M6 FLAT WASHER | M6 FW |
| 2 | M6 X 16 HEX | M6X16 HEX BOLT, ZP, 8.8 |
| 6 | M8 HD FLAT WASHER - BZP | M8 FLAT WASHER - High Tensile 19x8x2mm, ISO4042 ZnNi BLACK PASSIVATED FINISH |
| 6 | M8 X 20 BHCS BLACK ZINC | SCREW, BUTTON HEAD CAP, M8X20X1.25, ISO4042 ZnNi BLACK PASSIVATED FINISH |

TOOLS REQUIRED

The following tools will be required to install the product.

| Hand Tools | Power Tools | Workshop Equipment |
|---|---------------------------------------|------------------------|
| Metric Socket Set 8-19mm Socket Extension Bar Metric Spanner Set 10-19mm Hex (Allen) Key Set 4-6mm Trim Puller Tool Flat Blade Screwdriver set Phillips Head Screwdriver set Utility Knife Side Cutters | Electric/Air Impact Driver (Optional) | Hydraulic Lift Trolley |

WORKSHOP SAFETY

It is the responsibility of the installer to always complete works in a safe manner. Make sure the following safety equipment is available and precautions are observed whilst fitting this product.

| | |
|---|--|
| <p>Hearing Protection</p>  | <p>Always wear ear protection when using power tools.</p> |
| <p>Eye Protection</p>  | <p>Ensure eye protection is always worn when cutting or drilling.</p> |
| <p>Manual Handling</p>  | <p>Do not attempt to lift bar assemblies or rock sliders on your own.</p> <p>Always use two people to lift or use mechanical Lifting aid such as hydraulic lifting trolley.</p> |
| <p>Vehicle Support</p>  | <p>Always ensure vehicle is properly supported when working on it. Do not attempt to fit products whilst suspension work is being carried out. Do not work under a vehicle supported only by a jack.</p> |



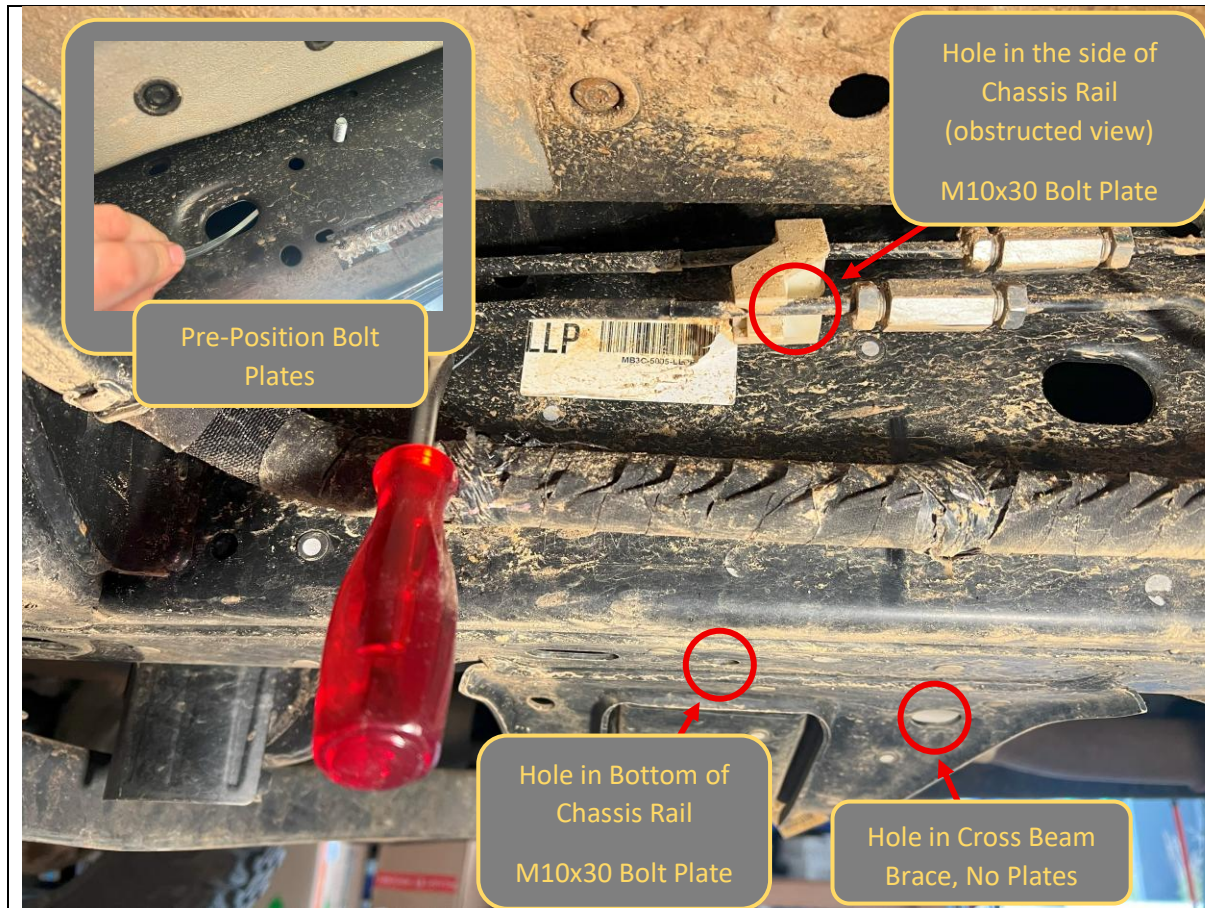
1. Remove Factory side steps if fitted by removing the 6x Bolts (2 Per mount) securing them to the body using a 12mm socket.
2. Discard Factory steps and bolts.

TOOLS REQUIRED

12mm socket

FASTENERS

6x Factory Flange head
Bolts
(per side)



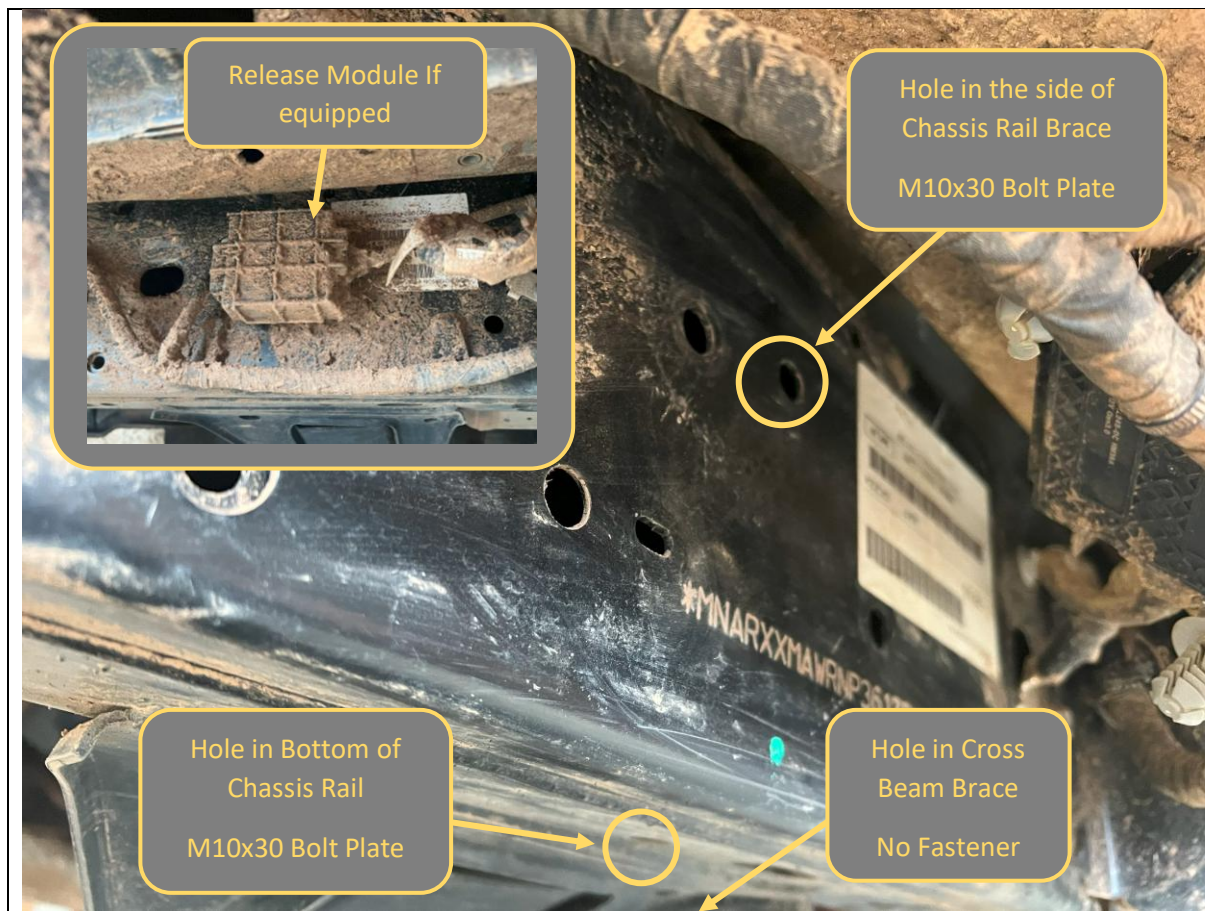
3. Starting on LHS of vehicle Locate features that front mount mounts to, referring to image above.
4. Using a trim tool release the plastic clips securing the hard hoses and wiring harness to the side of the chassis rail to allow extra space to work.
5. Pre-Position the Bolt Plates for the Front Mounts in the locations shown. Bend the stems to allow the plates to be manipulated to the correct positions.

TOOLS REQUIRED

Trim Tool

FASTENERS

2x M10x30 Bolt Plate



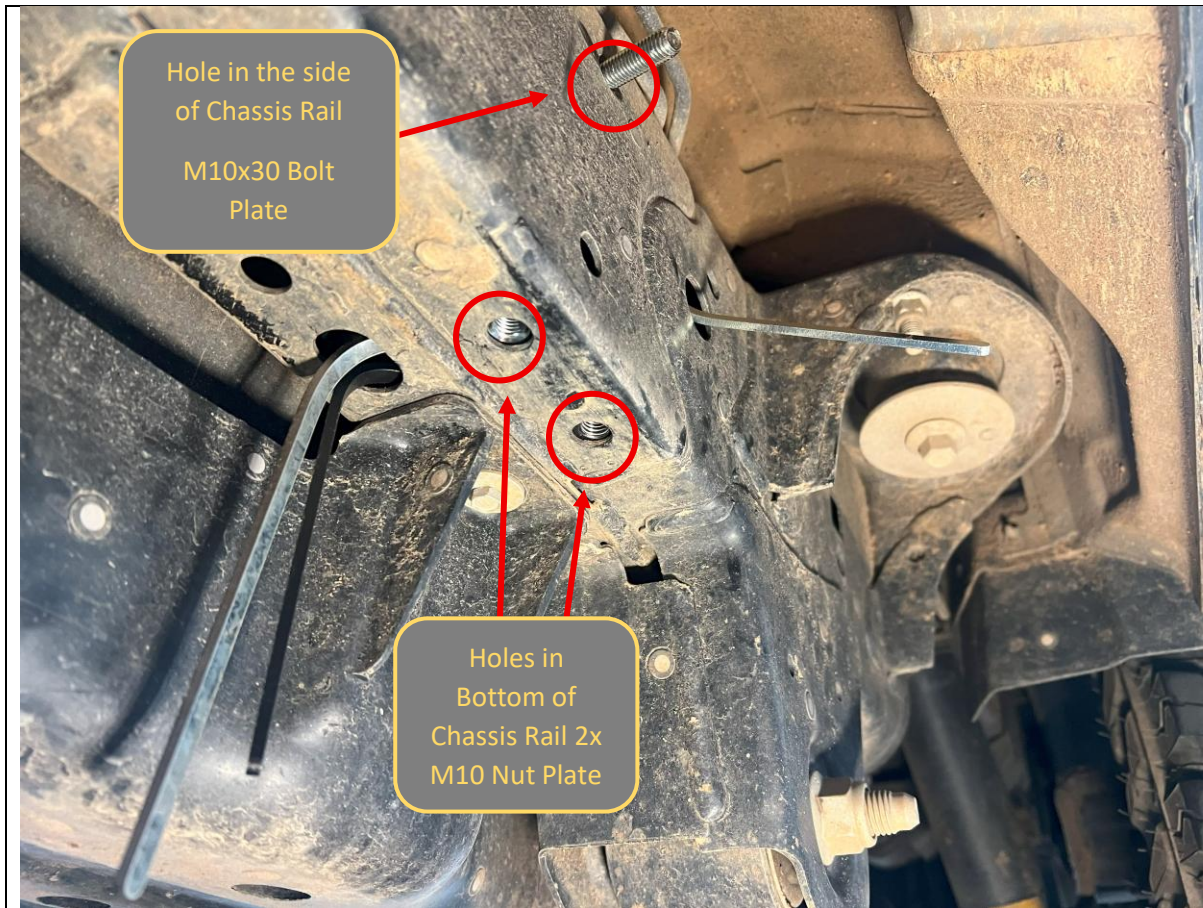
6. Repeat on RHS of vehicle Locate features that front mount mounts to, referring to image above.
7. Pre-Position the Bolt Plates for the Front Mounts in the locations shown. Bend the stems to allow the plates to be manipulated to the correct positions.
8. High specification models may have electrical module mounted to the chassis on the RHS. If equipped release module from chassis by prying off Christmas tree plugs using trim tool

TOOLS REQUIRED

Trim Tool

FASTENERS

2x M10x30 Bolt Plate



9. Locate the features for the rear mount in the chassis, just forward of the rear control arm hanger as annotated in the image above
10. Feed in nut plates for the bottom mount, using slot in the bottom of chassis, and align with the holes
11. Feed in bolt plate for the top mount, using large hole in the side of chassis towards body mount, and position with thread protruding through the hole.
12. Repeat on both sides of vehicle.

TOOLS REQUIRED**FASTENERS**

2x M10 Nut Plate
1x M10x30 Bolt Plate

Per Side



13. Unpack welded slider assembly and position on lifting trolley such that mounts sit approximately level.

TOOLS REQUIRED

Lifting Trolley

FASTENERS



14. With assistance from another person fit the slider to the vehicle and secure to pre-positioned nut and bolt plates with M10x30 bolts and Flange Nuts.

15. We find the best way to achieve this is to have one person underneath the car to manipulate the mounts and nut / bolt plates into position and a second person to assist support and position the slider assembly. It is necessary to move the slider inwards first and then up to the final position.

NOTE: The preplaced bolt plates will need to be manipulated back into the chassis momentarily to allow the slider to move up into the correct position.

16. Ensure the sliders sit directly against the chassis rail and do not pinch or trap any electrical harnesses or fluid lines.

TOOLS REQUIRED

Lift Trolley
Patience
Finger Dexterity

FASTENERS

2x M10 x30 Bolt
2x M10x30 HD Washer
3x M10 Flange Nut



17. Once secure, finish front mount installation securing final mounting point with M10x30 Bolt, HD Flat Washer, and Flange Nut.

TOOLS REQUIRED**FASTENERS**

1x M10 x30 Bolt
1x M10x30 HD Washer
1x M10 Flange Nut



18. Snug all mount bolts, first on the bottom, then on the side to pull mounts toward chassis. Ensure mounts are sitting against chassis rails.
19. Fully tighten mounting bolts, Starting on bolts on the bottom of chassis, then on the side of chassis.

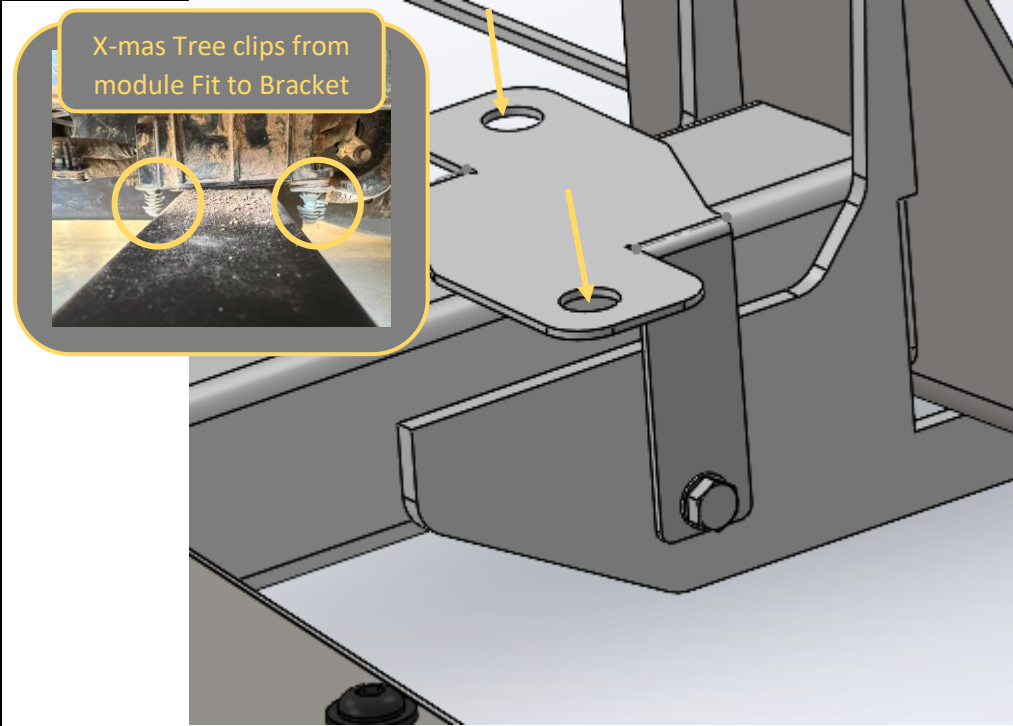
TOOLS REQUIRED

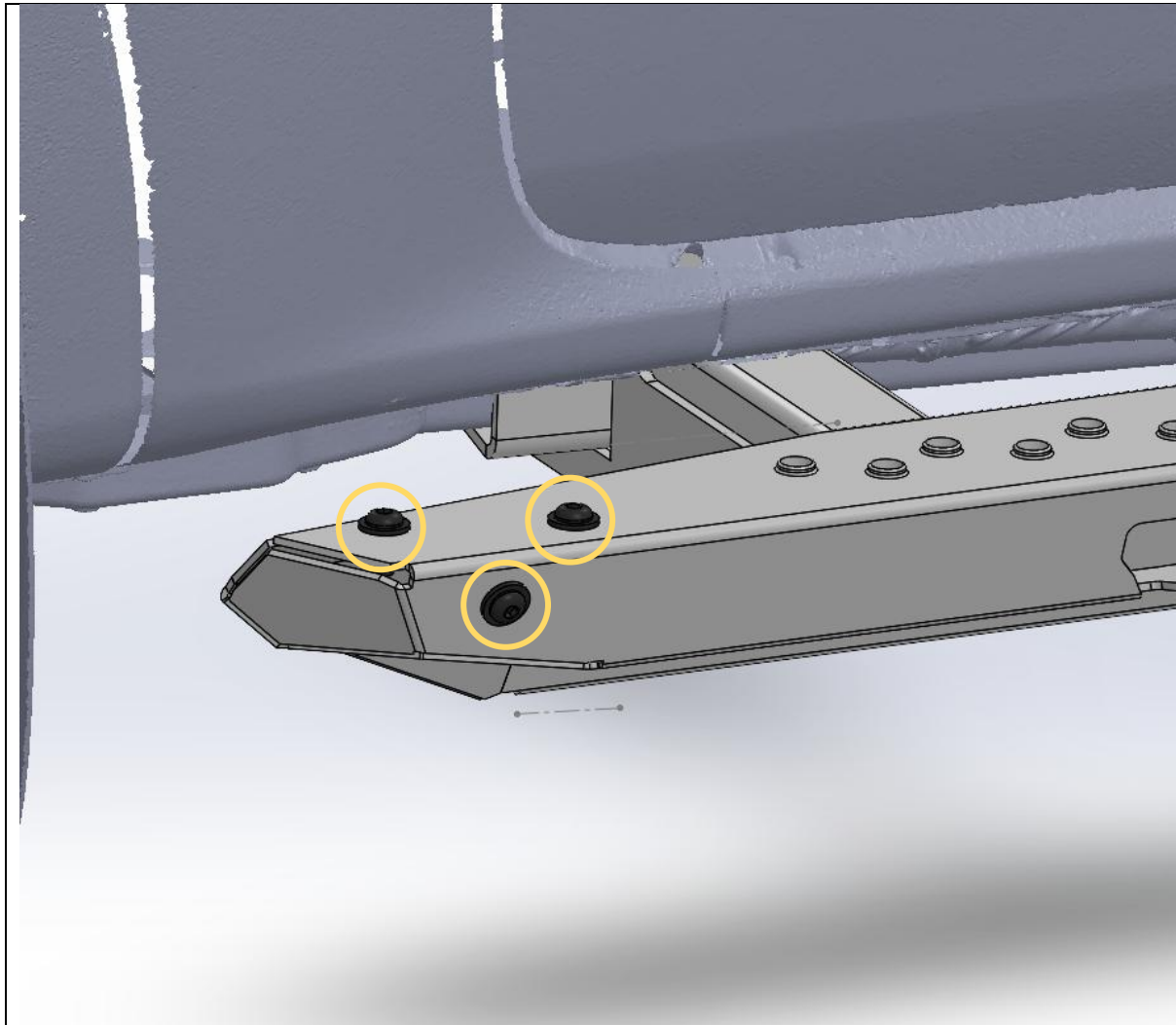
15-16mm Spanner/Socket

FASTENERS



| | |
|---|--|
| <p>20. Check that step is sitting level to body / chassis. If the step is not level, it is likely that bolts were tightened out of sequence and mounts are not sitting flat against the chassis. To remedy loosen bolts and Repeat Steps 18 and 19.</p> | <p>TOOLS REQUIRED</p> <p>15/16mm socket / spanner</p> |
| | <p>FASTENERS</p> |

| | |
|---|---|
|  | |
| <p>21. Repeat the step fitment steps 13 to 20 for the opposite side of the vehicle.</p> <p>22. On the RHS, if vehicle is equipped with the extra electrical box, fit the mounting bracket to the front RH mount using supplied M6x16mm Hex Bolts, Flat Washers + M6 Flange Nuts</p> <p>23. Fit the electrical box to the bracket using original X-mas Tree clips onto the holes in the mount bracket.</p> | TOOLS REQUIRED 10mm Spanner / Socket |
| | FASTENERS 2x M6x16 2x M6 Flat Washer 2x M6 Flange Nut |



24. If also fitting Side rails to car equipped with a Toro bulbar do so now, follow instructions supplied with the side rail kit.
25. If not fitting side rails, fit the supplied M8x20 Black Button head bolts and Black Washers to cover side rail attachment threads on front end of the slider step.
26. Double Check all fasteners are tight, and you are done!

TOOLS REQUIRED

5mm Hex Key

FASTENERS

3x M8x20 Black Button Head
3x Black M8 Washer



Congratulations!
Head for the tracks and enjoy your newly protected Ford Everest!